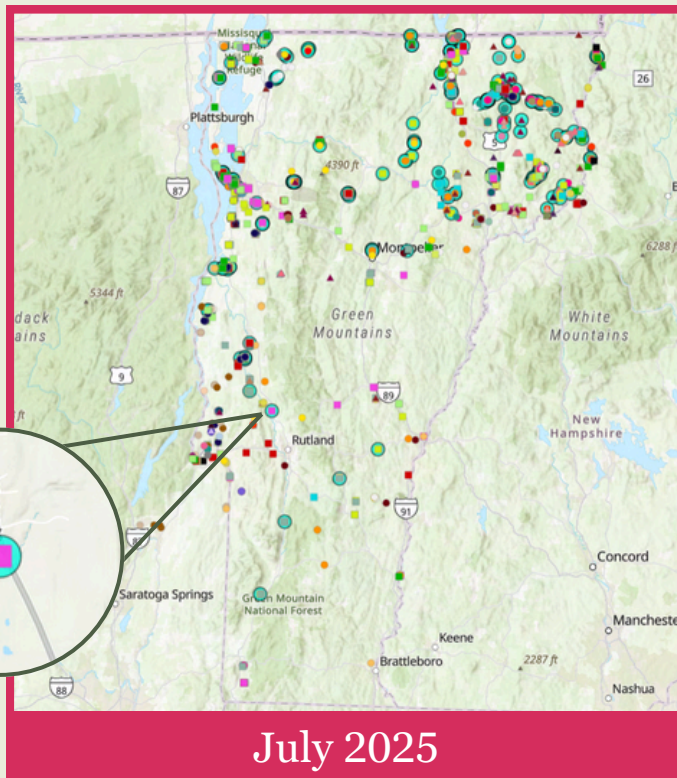
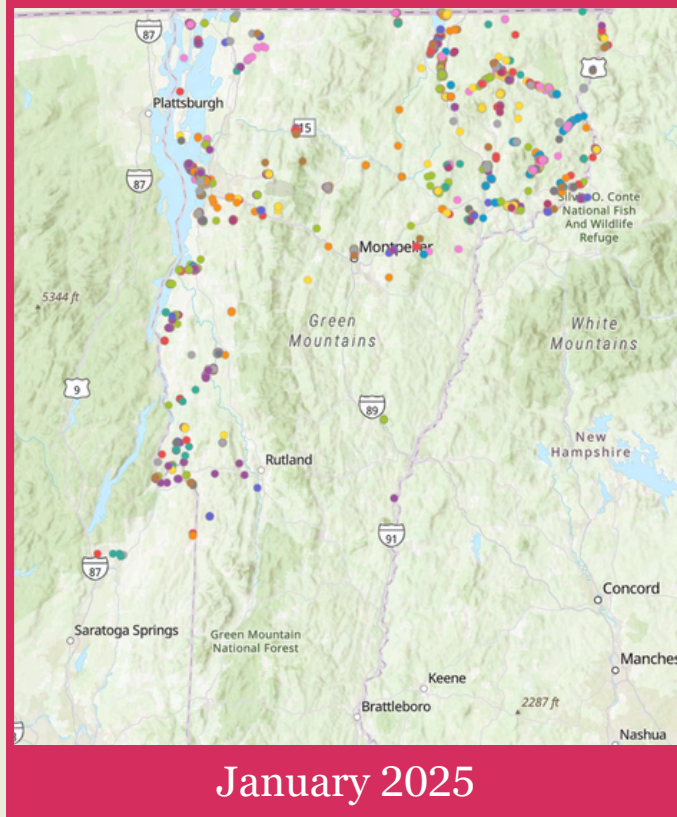


RIPARIAN LANDS NATIVE SEED PARTNERSHIP NEWSLETTER

Woolly-headed willow (*Salix eriocephala*) 5/28/2025
© Intervale Center

Seed Source Map Update

After a couple of years exploring sites in our base areas of the northern Champlain Valley and Northeast Kingdom, we felt a need to expand into southern Vermont for greater genetic representation in our collections from all 4 seed zones of Vermont. With much support from organizations who work in southern Vermont, which we will describe in the next page, we were able to start identifying sites as far south and Brattleboro and Bennington. Another addition to the map features is being able to show which sites have been collected from. You can see that by the blue “halo” around many of the points. This will help us more quickly differentiate areas that are active collection sites vs. potential sites. Big thanks to Christopher McManus on the Intervale Lands Team who makes continued updates like this possible!



THIS ISSUE

MAP UPDATES
PAGE 1

GOING SOUTH
PAGE 2

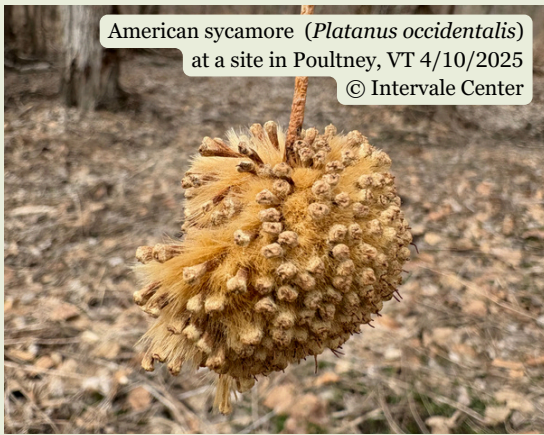
COLLECTION DAYS
PAGE 3

OUTREACH EVENTS
PAGE 4

DIRECT SEEDING
PAGE 5

CONTACTS &
RESOURCES
PAGE 6





American sycamore (*Platanus occidentalis*)
at a site in Poultney, VT 4/10/2025
© Intervale Center



Shrub willow (*Salix* spp.) at an alluvial fan in
Plymouth, VT 5/8/2025
© Intervale Center



Vermont River Conservancy, NorthWoods, and
Intervale folks after a day of scouting 4/2/2025
© Vermont River Conservancy



Pussy willow (*Salix discolor*) collection in
Plymouth, VT 5/15/2025
© Intervale Center

Work to expand into more southerly sites started in the fall of 2024 with University of Vermont students in the Rubenstein School of Environment and Natural Resources (RSEN) NR4060 Environmental Problem Solving and Impact Assessment course to use GIS in identifying potential seed source locations, based on certain criteria provided by Brooke and Jess – including distance from water, trails, and/or roads, and areas located on public land ([check out the finished map here](#)). Intervale and NorthWoods crews heavily rely on public land for seed source locations and have an agreement with the state to collect on any state-owned lands. In an effort to reach more private landowners, we have connected with southern restoration practitioners who have relationships with local landowners to bridge a connection and obtain seed collection permissions beyond solely public land. A great example of this is when Kelly Stettner (Ottawaquechee Natural Resources Conservation District / Black River Action Team) connected us with a landowner along the Black River / Money Brook in Plymouth, VT where many of our most common shrub willow species were present. By late-May we returned to the site to collect as the seed-bearing pods started to open up. After processing, approximately 575,000 seeds were collected from this property!

Closer to the start of the season in April, both Intervale and NorthWoods crews met up with folks from Billings Farm, Ottawaquechee Natural Resources Conservation District, Woodstock Union High School, and Dartmouth College to discuss seed collection and native tree nursery propagation needs in the area. That night, Hayley Kolding from Vermont River Conservancy (VRC) graciously hosted the Intervale and NorthWoods crews. The following day, they went out with both Hayley and Isla Lyons from VRC who had identified some potential seed collection sites as far south as Brattleboro. The following week, the two crews visited Eliza Merrylees, who is the Conservation Easement & Land Steward for The Nature Conservancy's Poultney office, and explored their Bald Mountain Preserve at the most southern edge of Lake Champlain. Jess Eller from Ducks Unlimited took the crews out the next day and explored some DU sites in Sunderland and Brandon. Since these initial scouting days, we returned to many of the sites for spring collections. Later this year, we plan to return to check on some of the more summer and fall dispersing species present at these sites.

This is just the beginning of the work we hope to continue into areas of the state we have yet to reach. Relying on the knowledge and experience of those who have deeper relationships with other parts of Vermont will connect us more easily to these areas as well. Thank you to all who have been so gracious and willing with their time at this point. If you work in the areas where we have more gaps on the map, let's chat!

COLLECTION DAYS



LaPlatte River Marsh Natural Area

For our second year, the Intervale, Friends of the Winooski River, North Branch Nature Center and their cohort of master naturalists teamed up to collect silver maple (*Acer saccharinum*) samaras from the LaPlatte River Marsh Natural Area, a property of The Nature Conservancy in the Shelburne, VT. Seeds collected from this site were then directly sown at North Branch Nature Center and a restoration site of Friends of the Winooski River for a lower cost, lower effort aim at restoring silver maple - ostrich fern forests. We all enjoy this event so much that we hope to make it a yearly tradition!



Redstart

At the height of eastern cottonwood (*Populus deltoides*) collection in early-June, a crew from Redstart and the Intervale joined together to collect from multiple sites in Williston, South Hero, and Alburgh. After a full day of collection and multiple days of processing, approximately 1,200,000 seeds (3 lbs) were collected! Eastern cottonwood was at the top of our target species list this spring collection season as almost all of the seeds were utilized in the direct seeding trials with the state at a property in Colchester, VT in the beginning of July.

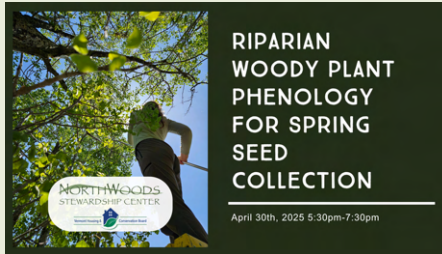
Throughout the spring season, Sterling College interns – Sam Stover and Finn Horak – and UVM professor Kyle Whittinghill, supported multiple days of shrub willow, eastern cottonwood, and red maple collection. The Riparian Lands team spent an afternoon teaching the Sterling College summer interns how to process shrub willow (right).



& more!

NorthWoods Stewardship Center Seed Series

The Riparian Lands team at NorthWoods has received funding from the Vermont Housing & Conservation Board to host workshops and events in the Memphremagog watershed in 2025 regarding phenology, collection, and processing of our target native tree and shrub species.



Spring Phenology for Seed Collection Workshop

At the end of April, NorthWoods hosted its first session of their 2025 Seed Series workshops covering phenology of target spring species of trees and shrubs. The Riparian Lands team showed off equipment used for scouting, collecting, and processing spring species. Jake also went out to collect samples from various spring species to showcase their current phenological stage for the event.



Silver Maple Collection Workshop

On June 1st, participants of the Spring Phenology workshop were invited to join the Riparian Lands team for silver maple collection in Coventry, VT. The event was originally scheduled for Memorial Day Weekend, but the seeds were not ready. Two participants were able to make the rescheduled date and Brooke drove out to join us as well! This small group managed to collect 11 gallons of samaras, which were sent back to the Intervale Center with Brooke at the end of the day!

Upcoming Events

Stay tuned to our [website](#) as details develop or email jess@northwoodscenter.org.

- **Summer Seed Collection Workshop** - August (date TBD)
- **Fall Phenology Workshop** – September (date TBD)
- **Fall Seed Collection Workshop** – October (date TBD)



PARTNERS LUNCH!

To celebrate all the work we do together, the Riparian Lands Native Seed Partnership hosted its second partner's lunch at the Intervale. We had so much fun with those who were able to make the trip and greatly missed those who couldn't! Either way, we are so grateful to you all for making this work such a joy. We feel so lucky to be a part of this knowledgeable and open community.

Fitzgerald Farm / Intervale WMA

Colchester, VT

At a recently acquired Wildlife Management Area (WMA) just across the Winooski River from the Intervale, another direct seeding project is underway! At this particular site, VFWD wanted to test different densities of seeding rates in our treatment plots. Within a 5.5 acre area, 24, 100x100 ft plots were established. 6 of those plots were controls that we did not seed anything. 6 plots had a rate of 10 seeds per square foot, 6 plots had a rate of 50 seeds per square foot, and 6 plots had a rate of 100 seeds per square foot. At the whole site, approximately 4,300,000 seeds were dispersed from 8 different species. Some of the most densely seeded species included eastern cottonwood (*Populus deltoides*) and silver maple (*Acer saccharinum*). Since being recently out of corn production, not much site prep was needed. By the time of seeding in early-July, there was a bit of lambsquarters (*Chenopodium album*) that had come up but plenty of bare soil was available for contact with the seeds we were dispersing. Before seeding, we set up the pump and water reel so that the site could be watered before and after seeding. Due to the hydroseeder consistently malfunctioning, we decided to hand-broadcast all of our seed. This took a bit more time but it gave us the chance to be much more intentional with seed-to-soil contact and each species was evenly distributed across each plot. Throughout the site, we noticed many naturally regenerating eastern cottonwood, silver maple, boxelder, and hackberry - all of which naturally occur on the edges of this site. The water reel has continued to water the plots for a week after seeding to help the small sprouts establish. We will cross our fingers for the right amount of rain until we can return and monitor this site later this summer. Click [here](#) to check out a recent news clip about the project!



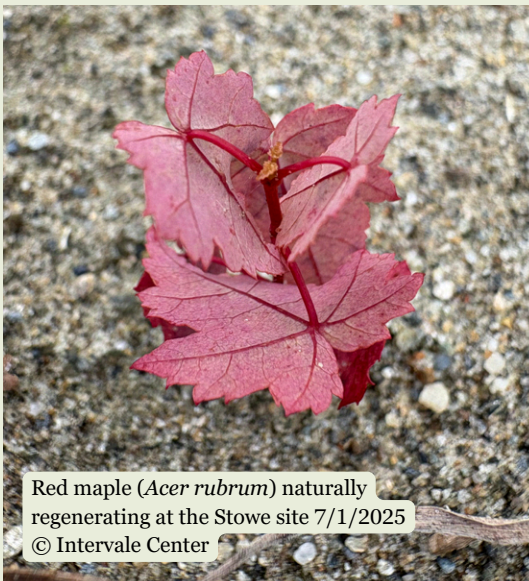
Brooke carrying stakes out for the initial plot set up at Fitzgerald Farm
© NorthWoods Stewardship Center



Eastern cottonwood (*Populus deltoides*) both just seeded and naturally regenerating
© Intervale Center



Pulling the water reel out at Fitzgerald Farm to water recently seeded plots
© Intervale Center



Red maple (*Acer rubrum*) naturally regenerating at the Stowe site 7/1/2025
© Intervale Center

CREP Farm Easement

Stowe, VT

This project came up a bit more opportunistically after speaking with folks from the U.S. Fish & Wildlife Service and Conservation Reserve Enhancement Program (CREP). This property had previously been planted with bareroot stock but after two years of major floods, it continued to get scoured by the high, fast waters. As a sort of last-ditch effort to restore this site, approximately 3,000,000 seeds (50 lbs) from 14 different species were dispersed on about 1 acre of sandy soil that had been deposited by the floods. Within the seed mix, there were fresh collections from 2025 as well as collections as old as 2017 that had low or unknown germination. This accounts for why the seeding rate is so much higher than Fitzgerald Farm. As folks from the Intervale, Vermont Fish & Wildlife, and CREP were hand broadcasting seed in early-July, we noticed a number of naturally regenerating red maples, boxelders, native grasses, sedges, and other herbaceous plants. Without formal monitoring funding, this site will be visited on an opportunistic basis in the coming months to check on its success.

Intervale seed crew members Maddie & Reese collect shrub willow (*Salix* spp.) 5/27/2025
© Intervale Center



Red maple (*Acer rubrum*) samaras 6/5/2025
© NorthWoods Stewardship Center



Shrub willow (*Salix* spp.) dispersal 5/28/2025
© Intervale Center



NorthWoods UVM intern Jo collecting silver maple (*Acer saccharinum*) 6/4/2025
© NorthWoods Stewardship Center

CONNECT WITH US



Brooke Fleischman (she/her)
Statewide Seed Coordinator ([Intervale Center](#))
brooke@intervale.org



Jess Colby (she/her)
Riparian Lands Program Coordinator ([NorthWoods Stewardship Center](#))
jess@northwoodscenter.org

RESOURCES



RLNSP:
Survey123
Form



VCE:
iNaturalist
Phenology
Tracking in
New England

The Riparian Lands Native Seed Partnership would not be possible without the financial support and advisory guidance of our core partnering organizations!

