

# RIPARIAN LANDS NATIVE SEED PARTNERSHIP NEWSLETTER

Black chokeberry (*Aronia melanocarpa*)  
© NorthWoods Stewardship Center

## Project Work Plan Sneak Peek!

The Riparian Lands Native Seed Partnership has been developing a 3-year project work plan that will help guide our efforts through 2028. The work plan will be finalized by the end of 2025. See below for a sneak peek!

**The Purpose of the Riparian Lands Native Seed Partnership** is to develop a statewide partnership of organizations that work together to meet the need for local native tree and shrub seeds for restoration projects that support fish and wildlife habitat, climate mitigation, and water quality improvement.

### Goals:

The partnership has identified three primary goals to aid in the expansion of the RLNSP:

1. Increase the availability of ecologically appropriate native seeds for direct seeding projects and conservation nurseries in the state and region.
2. Share and exchange information in native seed best practices and further develop partnership communication resources.
3. Evaluate the needs to establish dedicated native seed processing and storage infrastructure in Vermont.

We plan to update and adapt the plan as necessary and will formally review the plan in 2028. This work plan is meant to define our work and make it transparent and accessible for potential partners and others interested in being part of this work. This plan is also for general audiences and potential funders who can help to support and sustain our work.

## THIS ISSUE

PROJECT WORK PLAN  
PAGE 1

FIELD HIGHLIGHTS  
PAGE 2-3

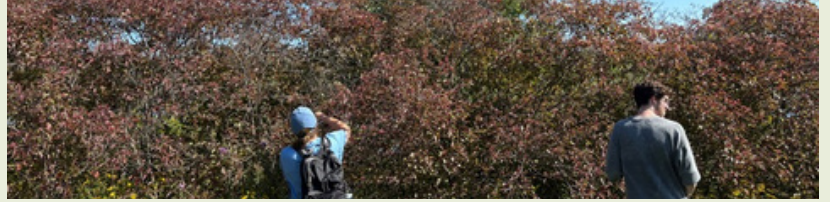
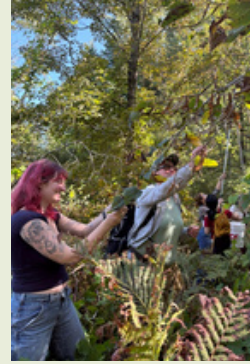
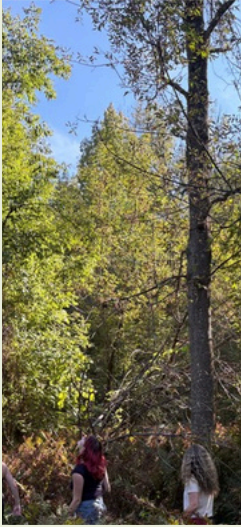
EVENTS  
PAGE 4

CONTACTS &  
RESOURCES  
PAGE 5

Black chokeberry (*Aronia melanocarpa*)  
© Intervale Center

# DAYS IN THE FIELD

## UVM Restoration Ecology Class

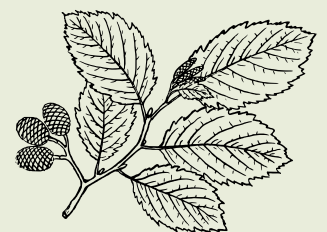
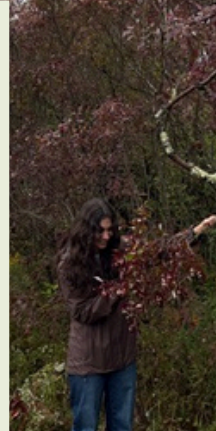
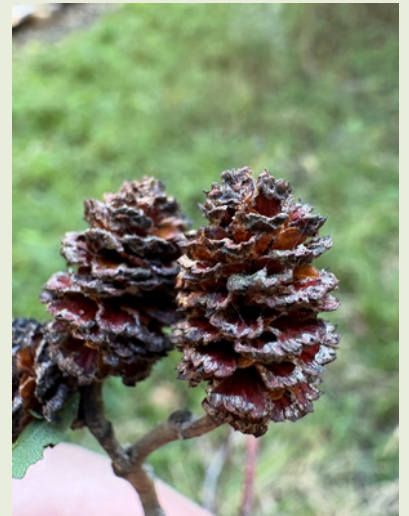
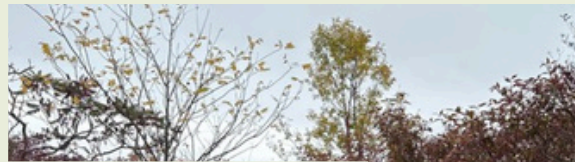


Taught by professor, Kyle Whittinghill, UVM's Restoration Ecology course reviews practices used to modify, restore, and remediate ecosystems altered by human activities. This fall, four separate lab groups joined us at field sites in Richmond, Colchester, Hinesburg, and Burlington to collect species such as American basswood (*Tilia americana*), gray dogwood (*Swida racemosa*), nannyberry (*Viburnum lentago*), boxelder (*Acer negundo*), and speckled alder (*Alnus incana* subsp. *rugosa*).

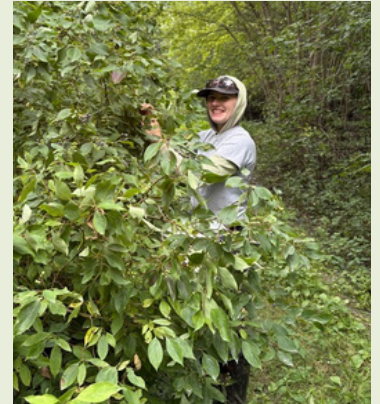


During our time, we covered species identification, what makes a "good" seed collection site, and other seed collection best practices such as obtaining landowner permissions prior to collection, how to tell whether seed is ready to collect, and only collecting 20% of what is available to allow for natural regeneration and wildlife foraging. This is our second year partnering with Kyle and her class and we look forward to continuing this work with UVM's next cohort

of restoration professionals!



## Redstart



At the end of August, Brooke and the Redstart crew teamed up to collect gray dogwood (*Swida racemosa*) and silky dogwood (*Swida amomum*) at Cornwall Swamp Wildlife Management Area and Brandon Swamp Wildlife Management Area.

## Upper Valley Land Trust



Earlier this year, we connected with Alexander van Engelen, a Land Steward for the Upper Valley Land Trust (UVLT) who had an interest in the potential for UVLT properties as seed collection sites. In July, Jess, Brooke, and Alexander initially scouted some potential properties around the Thetford and Fairlee areas for fall dispersing species. We returned on two occasions in September and October to collect species such as silky dogwood (*Swida amomum*), musclewood (*Carpinus caroliniana*), gray birch

(*Betula populifolia*), paper birch (*Betula papyrifera*), and speckled alder (*Alnus incana* subsp. *rugosa*) from four distinct properties. We will return to the Upper Valley in spring 2026 to scout other UVLT properties for spring dispersing species as a part of our work to expand the genetic diversity represented in restoration projects across Vermont.

## Carse Wetlands

Brooke, David Berg (Verterra Nursery), and Amy Siedl (UVM professor) visited Carse Wetlands at the end of August to collect tamarack (*Larix laricina*) and discuss how David and Brooke can share their work with the Fellowship for Restoration Ecologies and Culture course that Amy co-leads. In September, the class met up with Brooke at Carse where she shared information about the seed partnership. Afterwards, they visited Verterra Nursery to learn about the newly established conservation nursery.

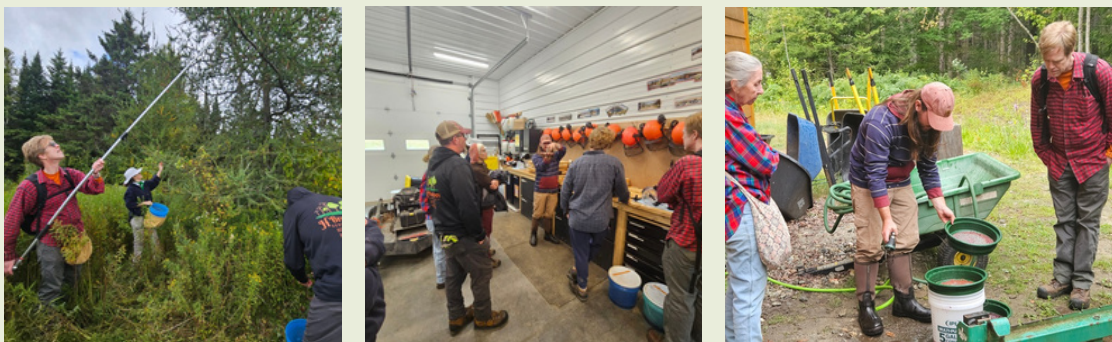


## Seed Collection & Paddle



On September 24<sup>th</sup>, folks from the Missisquoi River Basin Association, Poultney Mettowee Natural Resources Conservation District, and Bird and Bee Native Plant Nursery teamed up with Intervale and NorthWoods to collect northern white cedar (*Thuja occidentalis*) in Shelburne. Approximately 15 gallons of cones were collected and after cleaning processes, we were left with over 1.6 lbs of seed! Seeds collected during this event will be used for direct seeding trials with the state and available to local conservation nurseries. Thank you to UVM for permitting seed collection at this property!

## NWSC Collection Workshops



These events are made possible through funding from the Vermont Housing & Conservation Board.



Back in August, the Riparian Lands team at NorthWoods hosted a summer seed collection and processing workshop – the third workshop in our 2025 Seed Collection Series. Participants joined us to learn the process of collecting tamarack (*Larix laricina*) – including how we identify sites, what we look for in seed quality and maturity, and how we figure out how many seeds we can collect off any given site. Afterwards, participants were able to watch as we processed silky dogwood (*Swida amomum*) in our Dybvig Seed Cleaner and black elderberry (*Sambucus canadensis*) in our food processor. Participants were able to bring home some of the seeds processed at the end of the workshop as well! Thank you to all our participants throughout this series – your interest and excitement surrounding seed collection for restoration work in Vermont has been outstanding!

For more information about upcoming NorthWoods events, please visit our website's [event page](#) or email Jess Colby at [jess@northwoodscenter.org](mailto:jess@northwoodscenter.org)

# EVENT RECORDING



## Tree seed collection workshop for New York state and the Northeast

This 2-hour workshop focused on seed collection strategies for these major tree species groups: large-seeded hardwoods (red oak, white oak, hickory), small-seeded hardwoods (red/sugar maple, black cherry), and conifers (eastern white pine, white spruce). Content was pulled from the Woody Plant Seed Manual, Seeds of Ontario Trees and Shrubs, the Field Guide to Native Oak species of eastern North America, and experience from panelists. The New York State Department of Environmental Conservation also provided a brief update and additional information about NY State reforestation efforts. View a recording [here!](#)

## CONNECT WITH US

**Brooke Fleischman** (she/her)

Statewide Seed Coordinator ([Intervale Center](#))

[brooke@intervale.org](mailto:brooke@intervale.org)

**Jess Colby** (she/her)

Riparian Lands Program Coordinator ([NorthWoods Stewardship Center](#))

[jess@northwoodscenter.org](mailto:jess@northwoodscenter.org)

## RESOURCES



RLNSP:  
[Survey123](#)  
[Form](#)



VCE:  
[iNaturalist](#)  
[Phenology](#)  
[Tracking in](#)  
[New England](#)

The Riparian Lands Native Seed Partnership would not be possible without the financial support and advisory guidance of our core partnering organizations!

